



Statement of Qualifications

Energy Link Industrial Services Inc.

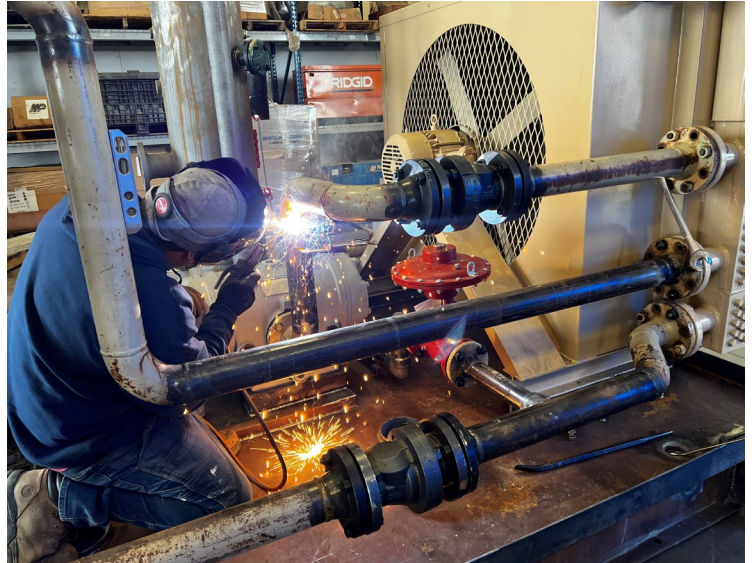
11439 S. Enos Lane
Bakersfield, CA 93311

P: 661.765.4444
EnergyLink1.com



Table of Contents

About Energy Link	3
Our Services	4
Who Is Energy Link	5
Responsiveness	6
Why Energy Link	7
Energy Link Management	8
Personnel	9
Construction Experience	10
Maintenance Experience	11
Overhaul Experience	12
Upgrade Experience	13
References	14
Claims	14
Channel Partners	15
Contact Information	17



Management Commitment

As the President of Energy Link Industrial Services, Inc., I am dedicated to implementing a quality management system, taking full accountability, and supporting the leadership team at Energy Link. Our management team uses the process approach and risk-based thinking to integrate the management system into our business processes to achieve the intended results.

We are committed to providing the necessary resources and training to ensure an effective quality management system for our success and improvement. We strive to maintain a work environment that enables our employees to meet our customers' needs successfully. The Quality Policy serves as the driving force behind our quality management system, and I will ensure it remains compatible with our organization's context and strategic direction.

Signature: **Ray Miller, President, Energy Link**

Officers and Management

Ray Miller, President
 Matthew Knight, VP Corporate Development
 Robert Hopkins, Finance Operations Manager
 Stephan Maxwell, Operations Management
 David Sandoval, EHS Manager
 Shaun Stroud, Construction Manager
 Larry Baker, Service Manager
 Morgan Moreno, Home Team Leader

Summary Description

Energy Link has been serving Customers since 1999, often as a single source supplier to various industries, including oil & gas, power generation, alternative fuels, agriculture, food processing, and general construction. Energy Link is rotating equipment and preventive maintenance specialists.

Contact Information

We have two locations in the heart of Central California:

Headquarters

11439 S. Enos Lane
Bakersfield, CA 93311
661-765-4444

Field Office

1440 Jason Way
Santa Maria, CA 93455
805-926-1103

Websites

EnergyLink1.com
OilfieldEquipment.energy

Incorporation

Energy Link Industrial Services is incorporated in the state of California, USA.

Business Description

Business Dimensions

>\$20MM Annually
>50% 3-Year Growth
HQ: Bakersfield, CA
FO: Santa Maria, CA

Industries Served

Oil & Gas
Agriculture
Utility
Construction

Key Clients

SoCal Gas
CRC
Aera Energy
PGE

Key Partners

WPI
Ariel Compression
Atlas Copco
Machinio

Key Products & Services

ASME Code Shop	Boots on the Ground	Used and Surplus Equipment
ISO 9001 Quality Management	Ariel Packager & Distributor	
The Hydrogen Factory	Compression Services	

Boots on the Ground Assets

50+ OEM/Ariel Trained Personnel: Mechanics, Welders, Crafts, Operators and Safety Mgmt.
23 Mechanics' Trucks equipped with cranes, tools, air compressors, and service bodies
18 Service Trucks and 8 Other Vehicles: flatbeds, delivery trucks, and crew vehicles
2 Stinger Cranes – 17-ton and 19-ton
Various trailers, water buffalos, and grout pumps

Credentials

- ISO 9001:2015 Quality Management Systems
- California Contractors Licenses:
 - Class A - General Engineering
 - C-7 - Low Voltage Systems
 - C-60 - Welding
 - C-61 – Specialty (Machinery and Equipment)
- ASME Code Shop with V&R Stamps
- UL 502A Certified Panel Shop
- Waukesha Qualified Service Provider

Safety Matters Most

Energy Link current TRIR Rating = 0.00
Energy Link current Mod Rate = 0.79
Energy Link PSM safety program drives the success of our Safety efforts.



Responsive

Energy Link prides itself on its ability to respond promptly. With sufficient staff to handle emergency callouts and maintain regular work schedules, the company is committed to starting projects on time and delivering customer service tailored to each client's preferences.

Energy Link is skilled at creating schedules using Microsoft Projects or Microsoft Excel formats, and the entire team, from upper management to laborers, ensures that no details are overlooked during schedule development. Thanks to the expertise of on-site employees and rigorous quality checks, Energy Link can complete tasks efficiently.

The company serves several industry leaders, such as Pacific Gas & Electric Company, South California Gas Company, and San Diego Gas & Electric Company, as well as major oil and gas providers in California, including Aera Energy, California Resources Corporation, Sentinel Peak Resources, and Plains LPG, among others. Energy Link is committed to providing top-notch service to every customer, regardless of their size and aspires to make their concerns and achievements its own.

Why Energy Link?

Energy Link Industrial Services Inc. should be considered for this contract because we provide the best customer service and with locations that allow us to respond quickly to emergency calls.

We have strong partnerships in the compression and pump industry that enable us to provide expedited services. Additionally, we have extensive expertise in construction, including pipelines, waterways, air and gas systems, pump bases, skids, cement pads, welding, structural work, grouting, and more.

We prioritize safety and hold weekly meetings to discuss relevant topics and review our Quality Control Manual. With skilled mechanics, welders, operators, and laborers, we are well-equipped to positively impact operations and maintenance at California Wastewater Division plant sites.

For over 100 years, the mechanic has been the muscle, bone, and stamina of the oil and gas industry in California.



We are the muscle for your success™ in the next 100 years.

Construction Case Studies

Customer	Location	Description	Project Value
PG&E	Bakersfield, CA	Refurbish five (5) Waukesha 375kw generator packages, fully customized to fit PGE applications and requirements. Start/End date: 11/2021 - 02/2024	\$4,420,000
SoCal Gas	Bakersfield, CA	Fabricate two (2) Leroi compressor packages including six (6) vessels, two (2) skid bases, piping (stainless and carbon), instrumentation, and electrical.	\$2,219,000
Brite Energy	Bakersfield, CA	Erect building #3 including structural, plumbing, electrical, compaction, parking, and foundation. Complied with building and structural codes for federal and local regulations.	\$2,804,000
Jet Aviation	Van Nuys, CA	30K jet aviation fuel skid fabrication and installation .	\$120,000

Maintenance Case Studies

Customer	Location	Description	Project Value
PG&E	Stockton, CA	Three (3) years of preventive maintenance operations, repair, and on-call services for compressor rental injection yard Start/End date: 11/2021 - 02/2024	\$4,480,000
Aera Energy	Lost Hills, CA	Two (2) Years of Repairs, Maintenance, and On-Call Services Start / End Date: 01/2021 - Current	\$4,458,000
Midstream Energy	Bakersfield, CA	Pipeline Maintenance from North Coles Levee to Roges Start / End Date: 01/2021 - Current	\$9,113
DHL Supply	Bakersfield, CA	Semi-Annual Preventative Maintenance for Conveyor Line Start / End Date: 01/2023 - Current	\$37,000
SoCal Gas	Buttonwillow, CA	Four (4) Provide Quarterly Preventative Maintenance Services on Sullair Air Compressor Start / End Date: 01/2020 - Current	\$9,200